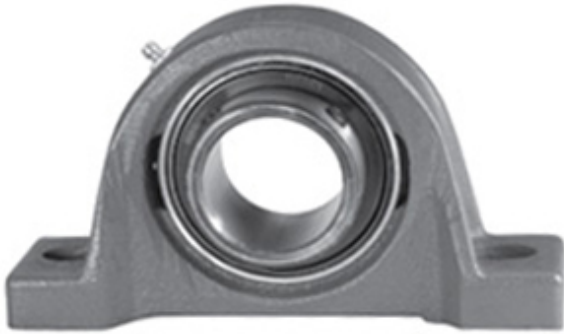


0.875 Inch | 22.225 Millimeter x 1.172 Inch |
 29.77 Millimeter x 1.313 Inch | 33.35 Millimeter
 LINK BELT PL3S214E Pillow Block Bearings



PL3S214E Bearing 2D drawings and 3D CAD models

Bearing No. PL3S214E

Category	Pillow Block Bearings
Inventory	0.0
Manufacturer Name	REXNORD
Minimum Buy Quantity	N/A
Weight	0.82
EAN	0662327421298
Product Group	M06110
Number of Mounting Holes	2
Mounting Method	Set Screw
Housing Style	2 Bolt Pillow Block
Rolling Element	Ball Bearing
Housing Material	Cast Iron
Expansion / Non-expansion	Non-expansion
Mounting Bolts	3/8 Inch
Relubricatable	Yes
Insert Part Number	SG214EL
Seals	Single Lip Contact
Housing Configuration	1 Piece Solid
Inch - Metric	Inch
Other Features	Single Row Intermediate Duty Low Base Extended Inner Race
Long Description	2 Bolt Pillow Block; 7/8" Bore; 1-5/16" Base to Center Height; Set Screw Mount; Ball Bearing; Relubricatable;



Jinan Chenyu Bearing Import & Export ...

	Cast Iron; Single Lip Contact; Non-expansion
Category	Pillow Block
UNSPSC	31171511
Harmonized Tariff Code	8483.20.40.40
Noun	Bearing
Keyword String	Pillow Block
Manufacturer URL	http://www.rexnord.com
Manufacturer Item Number	PL3S214E
Manufacturer Internal Number	5842129
Weight / LBS	1.8
Actual Bolt Center to Center	4.1 Inch 105Millimeter
D	1.172 Inch 29.77 Millimeter
d	0.875 Inch 22.225 Millimeter
B	1.313 Inch 33.35 Millimeter
Bolt Spacing Maximum	0 Inch 0Millimeter
Bolt Spacing Minimum	0 Inch 0Millimeter
Nominal Bolt Center to Center	4.1 Inch 105 Millimeter